



SHARP Meeting Launcher Application

User Manual

Supported products:
SHARP PN-LA862 / PN-LA752 / PN-LA652

Table of content

	Page
1. Introduction	
1.1 About SHARP Meeting Launcher	2
1.2 Supported devices	2
1.3 Note	2
2. SHARP Meeting Launcher application	
2.1 Main screen of SHARP Meeting Launcher application	3
2.2 Configuring SHARP Meeting Launcher	4
2.3 How to access the settings menu	5
2.4 Settings menu	6
2.4.1 Explanation of settings menu	6
2.4.2 Settings menu of "Launcher Categories"	7
2.4.3 How to register a new app in SHARP Meeting Launcher	8
2.5 Settings menu "General"	11
2.5.1 Explanation of settings menu "General"	11
2.5.2 How to change wallpaper in launcher	13
2.6 Settings menu "Security"	14
2.6.1 Explanation of Settings menu "Security"	14
2.6.2 How to change PIN code of Sharp Meeting Launcher	16
2.7 Settings menu "Reset"	17
2.8 Useful function	18
2.8.1 How to access opened apps and files	18
2.8.2 How to return to launcher home screen	19
2.8.3 How to perform a reset after a meeting	20

1. Introduction

1.1 About SHARP Meeting Launcher

The SHARP Meeting Launcher provides quick and easy access to your favorite apps while offering a secure and locked environment.



SHARP Meeting Launcher is installed and used on a PC connected to the display.

[SDM]

1. SHARP Meeting Launcher app comes pre-installed on the Intel® SDM-L Collaboration.
2. The Intel® SDM-L Collaboration is designed for Sharp LA Series displays.
3. Installing the SDM slot-in PC to your display: for detailed instruction, please refer to the installation guide of the Intel® SDM-L Collaboration.

1.2 Supported devices

Device type	OS	Supported version
PC	Windows	Windows 11 or later

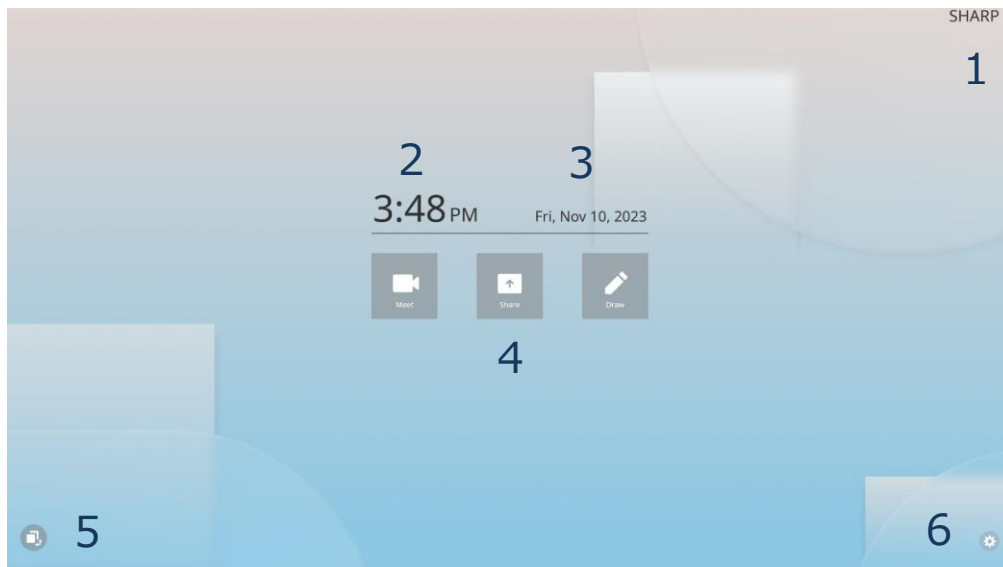
1.3 Note

- This software has been shipped after strict quality control and product inspection. If, however, you find any failure, contact your product dealer.
- Please understand that SHARP CORPORATION bears no responsibility for errors made during use by the customer or a third party, nor for any other malfunctions or damage to this software arising during use, except where indemnity liability is recognized under law.
- Transcribing or duplicating part or all of this manual and/or this software without permission from our company is not permitted.
- As a part of our policy of continuous improvement, SHARP reserves the right to make design and specification changes for product improvement without prior notice.
- The screens and procedures are examples. The contents or details may vary. The screen is for explanatory purposes.

2. SHARP Meeting Launcher

2.1 Main screen of SHARP Meeting Launcher application

Once you opened the Sharp Meeting Launcher, the following home screen will appear:



1. Room name: At initial setting no room name is shown. A "Room name" can be added in the settings menu.
2. Time: Shows current time (based on Windows time setting)
3. Day of week, date and year (based on Windows time setting)
4. Launcher categories:
 - At initial setting the category icons are named "Meet", "Share", "Draw". The category names and icons can be changed in the settings menu.
 - At the initial setting, no apps are registered inside the launcher categories.

Note: You can display a maximum of three launcher categories.

5. Open apps button: When clicking this button all open apps will be displayed.
6. Settings menu button: When clicking this button, the settings menu will open.

2.2 Configuring SHARP Meeting Launcher

This section covers how IT administrators can interact with the SHARP Meeting Launcher to improve and customize meeting space functionality.

IT administrators can access the settings menu at any time and adjust the appearance and behavior of SHARP Meeting Launcher.

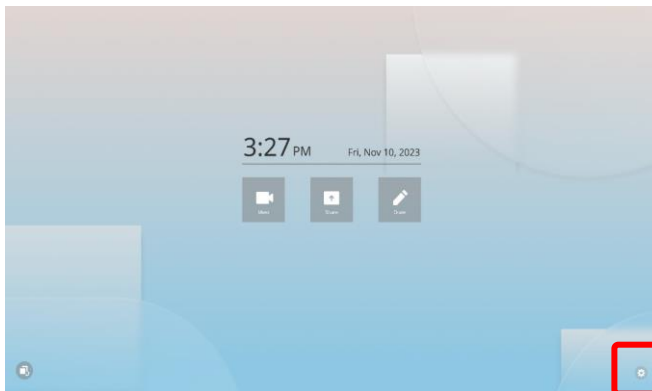
During this section we will explain the following:

1. How to access settings menu
2. How to register applications
3. How to customize the home screen appearance
4. How to secure the device
5. How to activate the reset function

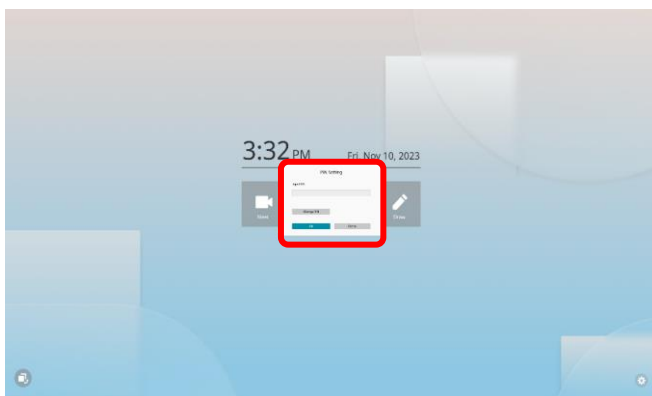
2. SHARP Meeting Launcher

2.3 How to access the settings menu

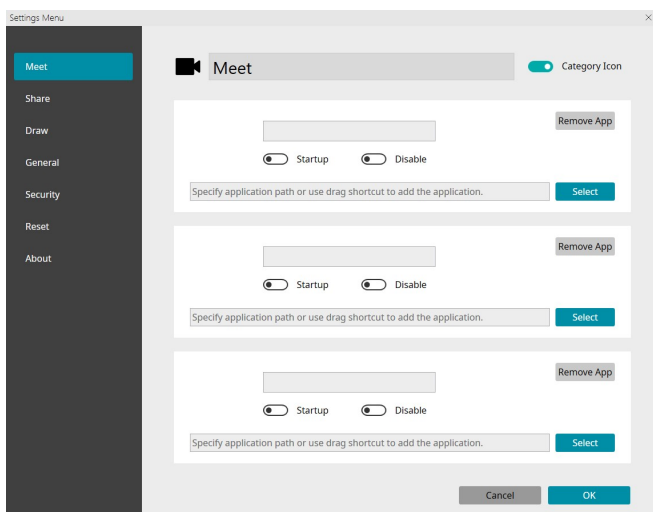
1. Click on the setting menu button.



2. When you access the setting menu for the first time you have to setup a PIN code. Make sure to remember the PIN code, since you will have to input the PIN code every time you want to access the settings menu.



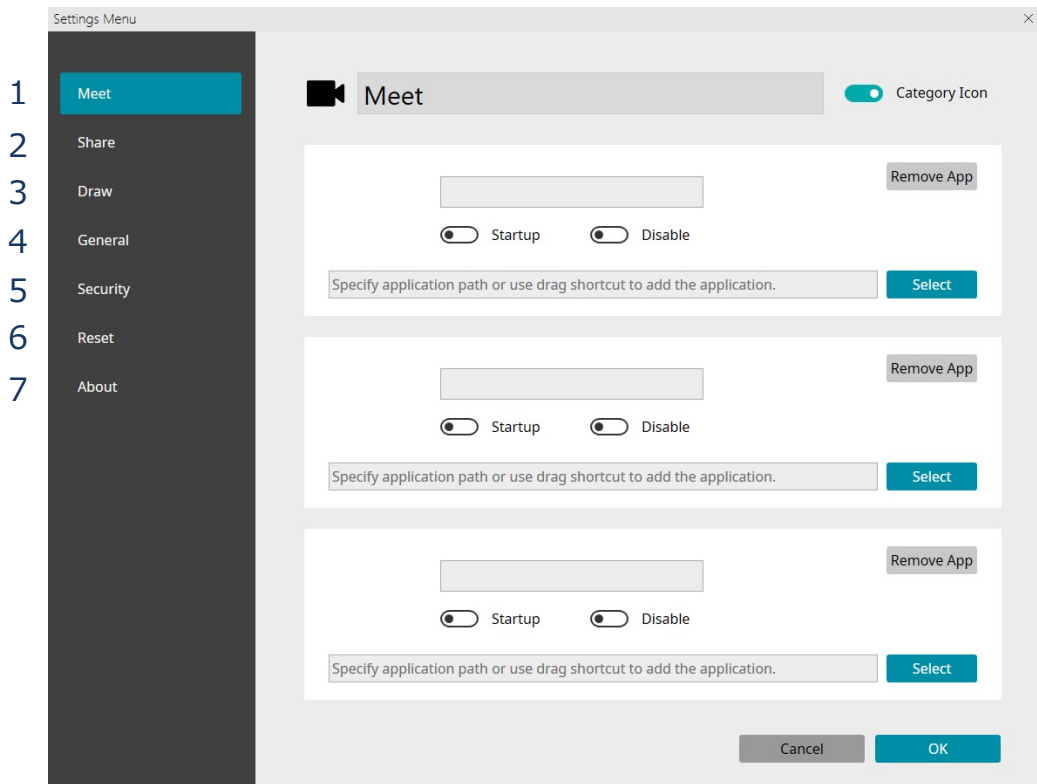
3. After setting up a PIN code, the settings menu will open.



2. SHARP Meeting Launcher

2.4 Settings menu

2.4.1 Explanation of settings menu

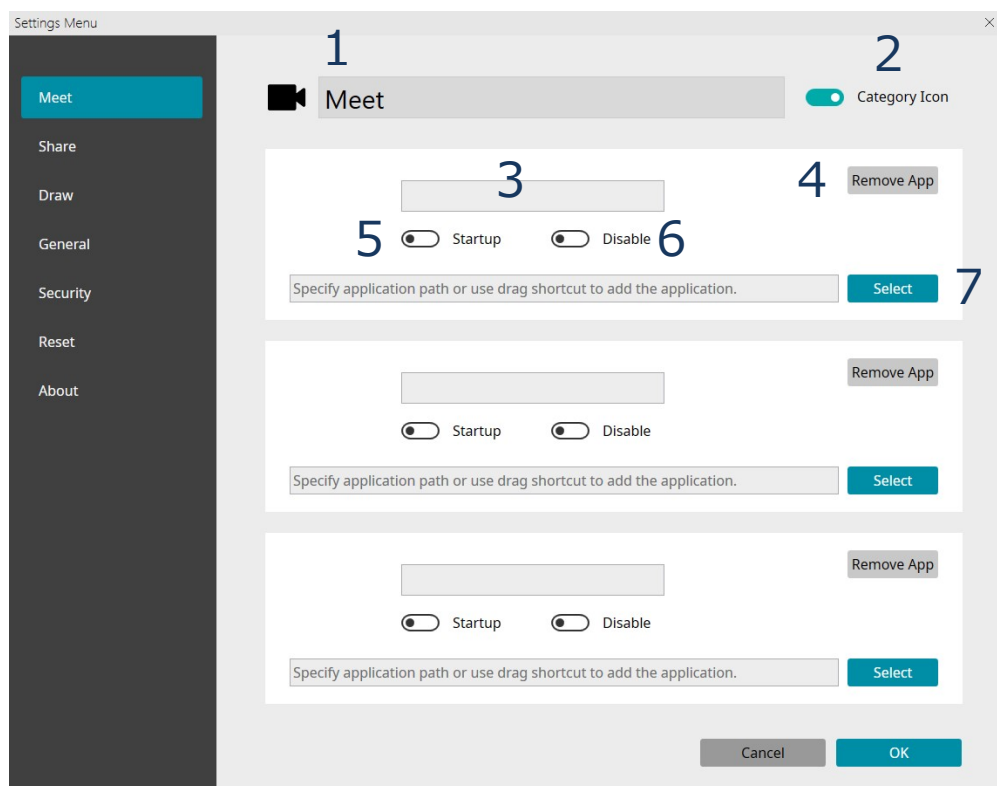


1. Meet: Configuration of the first app category.
2. Share: Configuration of the second app category.
3. Draw: Configuration of the third app category.
4. General: Configuration of home screen appearance.
5. Security: Configuration of launcher security settings.
6. Reset: Configuration of reset functions.
7. About: Shows information of current app version.

2. SHARP Meeting Launcher

2.4.2 Settings menu of “Launcher Categories”

“Meet”, “Share” and “Draw” have same settings.



1. Category name: You can change the name of the launcher category being displayed on the home screen. You can also remove the category name and leave it blank. As a result, no category name will be displayed on the home screen.
2. Category icon: You can change whether the category icon will be displayed on the home screen or not. When removing the category icon but loading an app to this category, the app logo will be displayed instead of the category icon.
3. App name: You can change the name of the app being displayed on the launcher home screen. When leaving it blank, no app name will be displayed on the home screen.
4. Start-up: You can configure every app to automatically open after launcher start up. In this case, whenever you open the SHARP Meeting Launcher, the configured app will automatically launch.
5. Disable: You can pre-register an app in the settings menu without showing the app on the launcher home screen.
6. Remove App: You can remove the registered app.
7. Select: You can specify the path for the app you want to register in this app category.

2. SHARP Meeting Launcher

2.4.3 How to register a new app in SHARP Meeting Launcher

Before you can add a new app to the Sharp Meeting Launcher make sure that the app is already installed on the Windows PC.

[SDM]

Apart from Sharp Meeting Launcher, the followings apps are pre-installed on the **Intel® SDM-L Collaboration**:

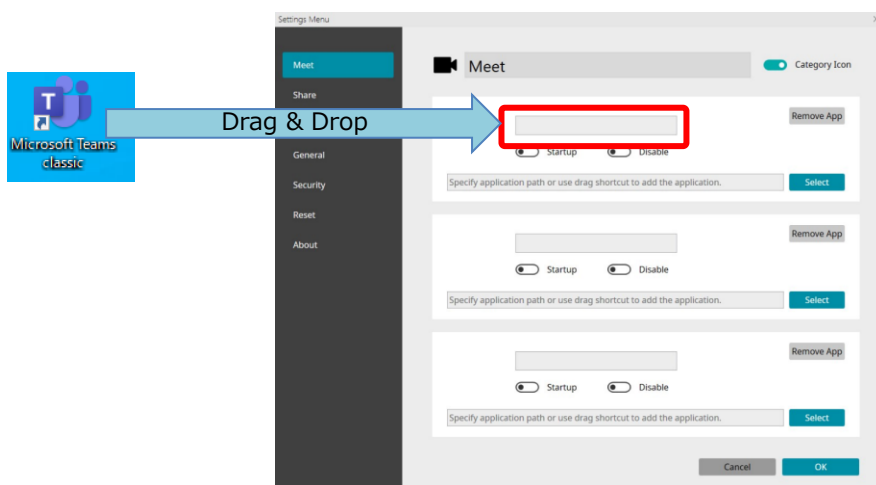
- **FlatFrog™ Board for Rooms** (1-year free license) collaborative whiteboard. We recommend to add the FlatFrog Board for Rooms app to the launcher category “Draw” of the Sharp Meeting Launcher.
- **AirServer™** wireless screen sharing. We recommend to add the AirServer app to the launcher category “Share” of the Sharp Meeting Launcher.

There are different ways how you can register a new app to the Sharp Meeting Launcher:

1. Drag and drop the app shortcut from the Windows desktop

The easiest way how to add a new app to a launcher category is to simply drag and drop the app shortcut from the Windows desktop into the category name field inside the settings menu.

To drag and drop an app from your Windows desktop, perform a left-click (mouse) or long-press (touch) on the app shortcut and move the mouse or finger to the category name field.



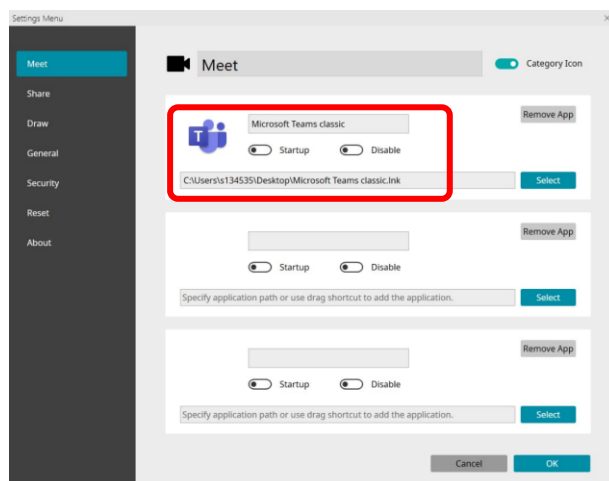
2. Input file path of the app

Click the “Select” button and search for the app you want to register inside the launcher on your Windows PC. In most case apps are installed on “C:\Program Files\...”.

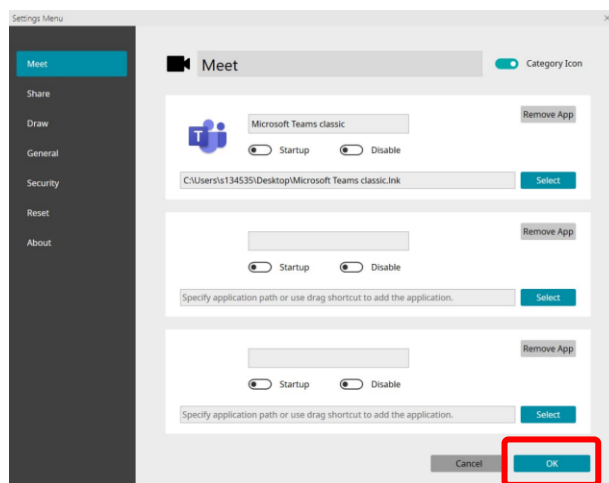
If you don’t know where on the PC an app is installed, you can right click on the app shortcut on your Windows desktop and select “Properties”. A window will open to show the app properties. You can now copy the app path shown at the “Target” filed and paste it into the §Select” field inside the launcher settings.

2. SHARP Meeting Launcher

Once done, the app icon, app name and app path will be displayed automatically. You can change the app name, being displayed on the launcher home screen, at any time.



Once you registered all your apps for one launcher category, click the “OK” button.



Note: You can register a maximum of three apps per each launcher category.

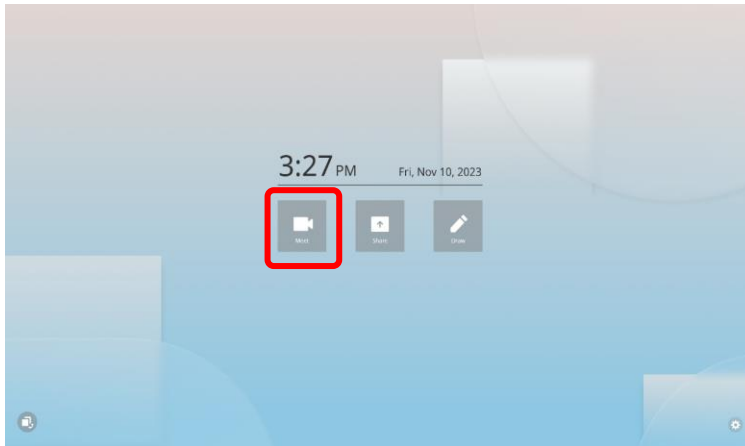
2. SHARP Meeting Launcher

Your apps are now successfully registered and will be displayed within the defined launcher category on the home screen.

The behaviour of the SHARP Meeting Launcher varies depending on the number of apps being registered per launcher category.

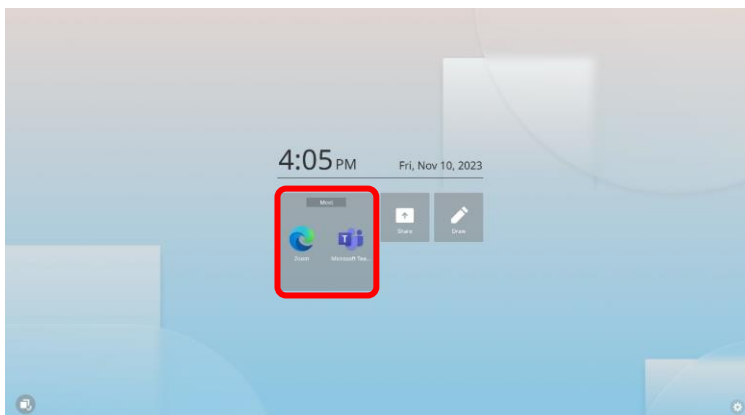
One app per launcher category:

If only one app is registered within a launcher category, the app will automatically launch when clicking on the category icon.



Two or three apps per launcher category:

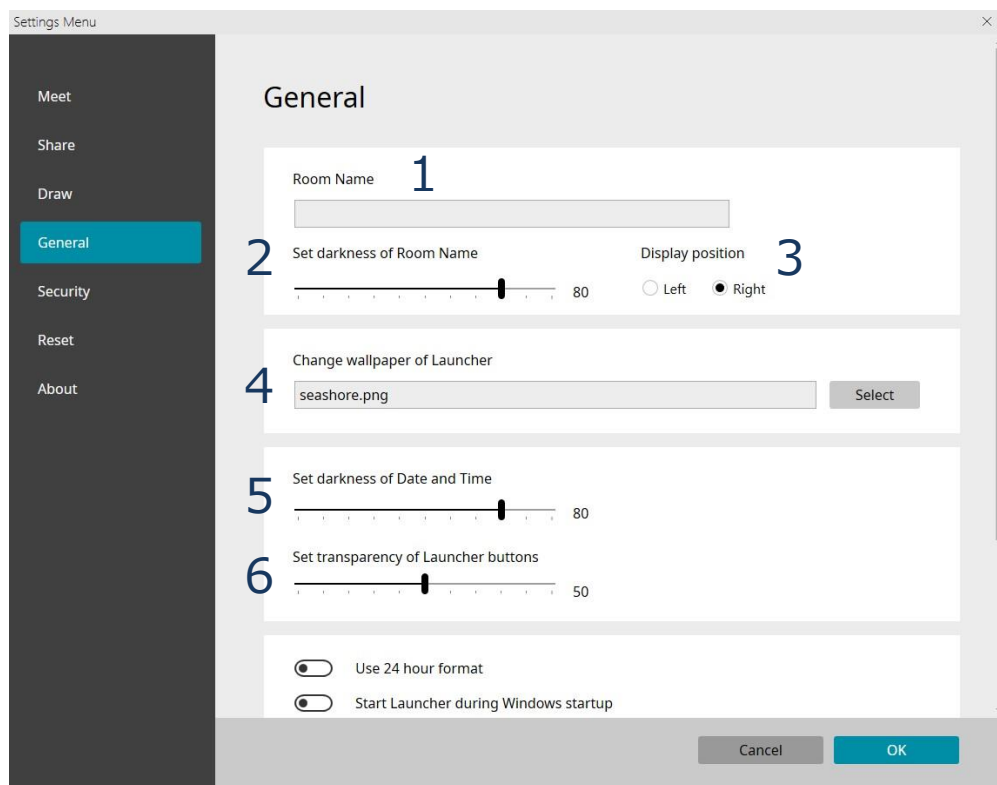
If two or three apps are registered within a launcher category, the launcher will first show the app icons (incl. app name) of all registered apps. Select the app you would like to open by clicking on the app icon and the app will launch.



2. SHARP Meeting Launcher

2.5 Settings menu “General”

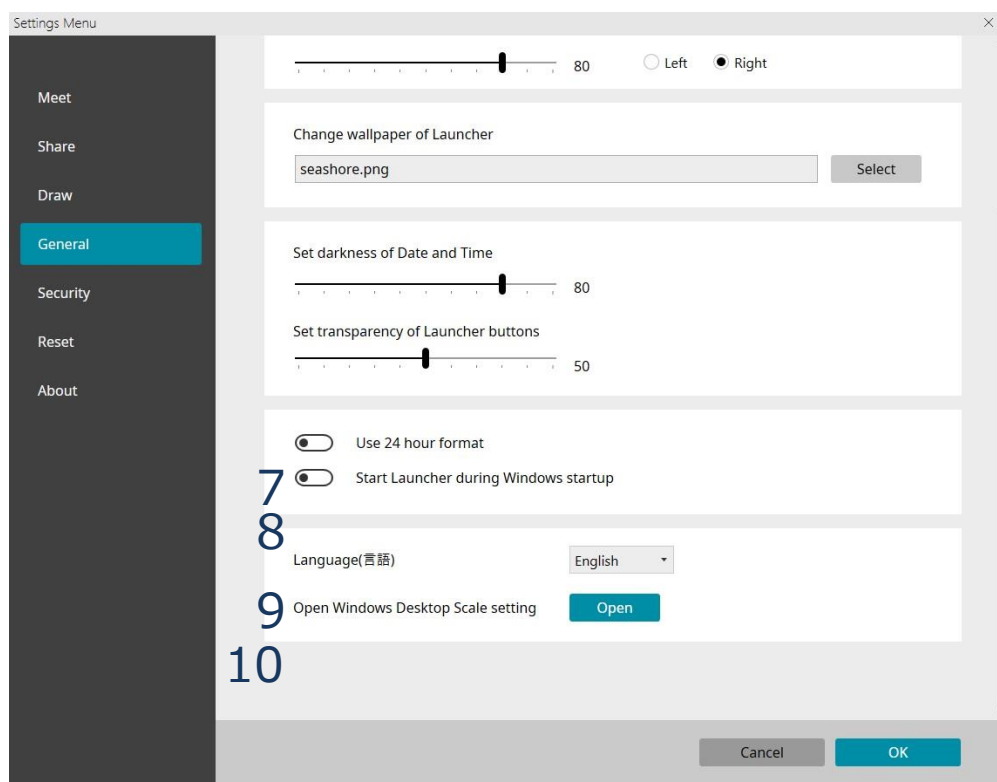
2.5.1 Explanation of settings menu “General” (1/2)



1. Room name: Initial setting is blank. When entering a room name, it will be displayed on the home screen of the launcher.
5. Set darkness of Room Name: Change the darkness of the room name font being displayed on the home screen depending on your launcher wallpaper. (“0” = white; “80” = black)
3. Display position: Change the position of the room name from right to left top corner of the launcher home screen.
4. Wallpaper: Change the wallpaper of the launcher home screen. Please refer to page 9 for more details.
5. Set darkness of date and time: Change the darkness of the date and time font being displayed on the home screen launcher. (“0” = white; “80” = black)
6. Set transparency of launcher buttons: Change the transparency of launcher buttons. (“50” = fully transparent) When setting the launcher button to full transparency, no launcher buttons will be shown and only the category icon or app icon will be shown on the home screen.

2. SHARP Meeting Launcher

2.5.1 Explanation of settings menu “General” (2/2)

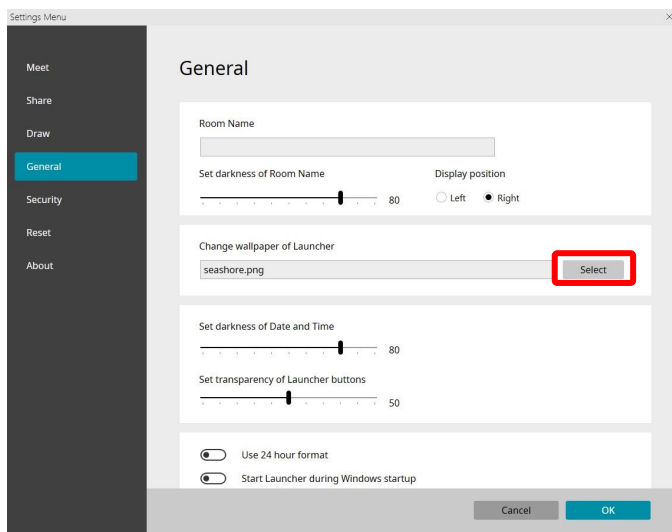


7. Time format: Choose between 24 hour format or 12 hour format.
8. Start Launcher during Windows startup: Select whether the Sharp Meeting Launcher starts up after Windows startup.
9. Language: Choose the app language. Currently only “English” and “Japanese” are supported.
10. Open Windows Desktop Scale setting: Shortcut to Windows Desktop scale setting. Changing the Windows scale setting will adjust the size of the launcher appearance. We recommend to use 100% scale setting for the Sharp Meeting Launcher.

2. SHARP Meeting launcher application

2.5.2 How to change wallpaper in launcher

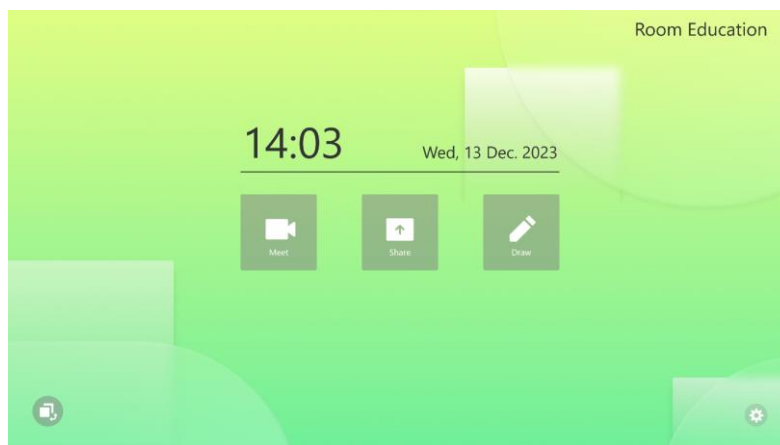
1. Click on the “Select” button.



2. Choose your preferable wallpaper. We prepared some wallpapers, but users can choose their preferable wallpaper other than the pre-prepared wallpapers. Once you click on “Select” the folder with the pre-prepared wall papers will open.



3. Once you selected a new wallpaper, click “OK”. The settings menu will close, and the launcher home screen will reflect the new wallpaper.

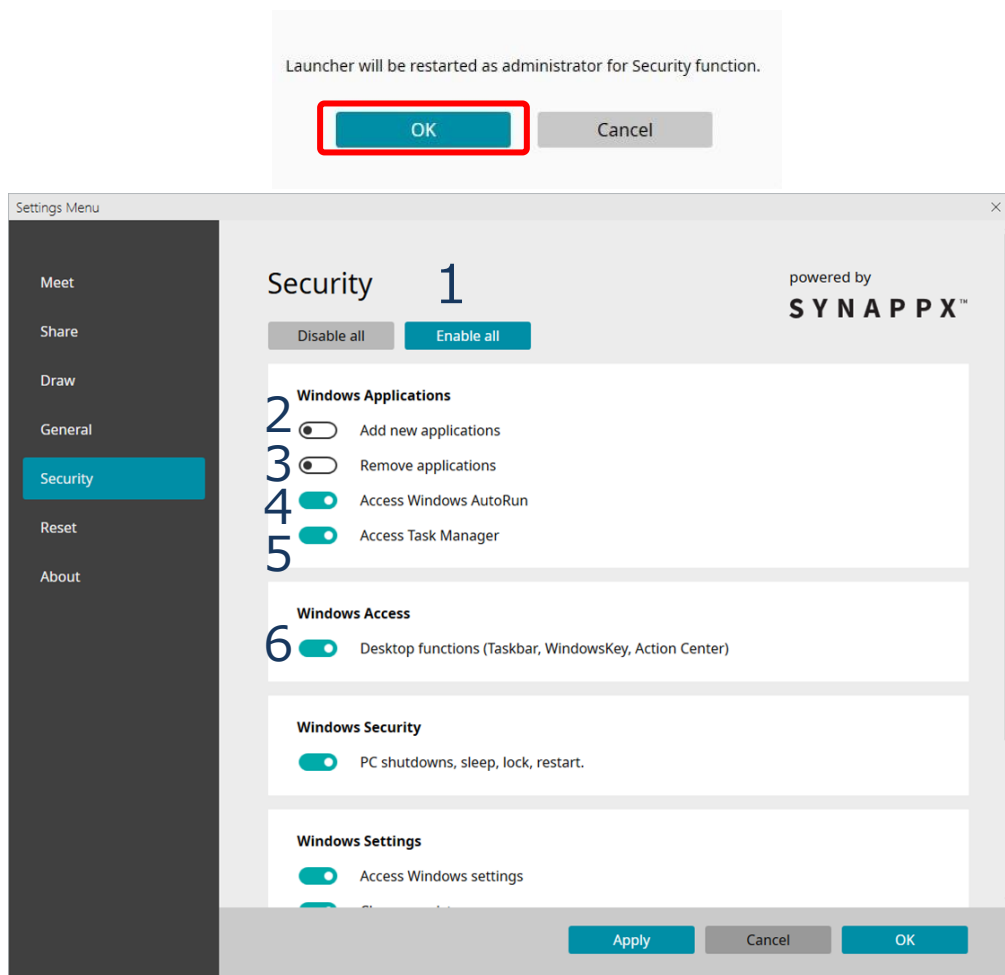


2. SHARP Meeting Launcher

2.6 Settings menu “Security”

2.6.1 Explanation of settings menu “Security” (1/2)

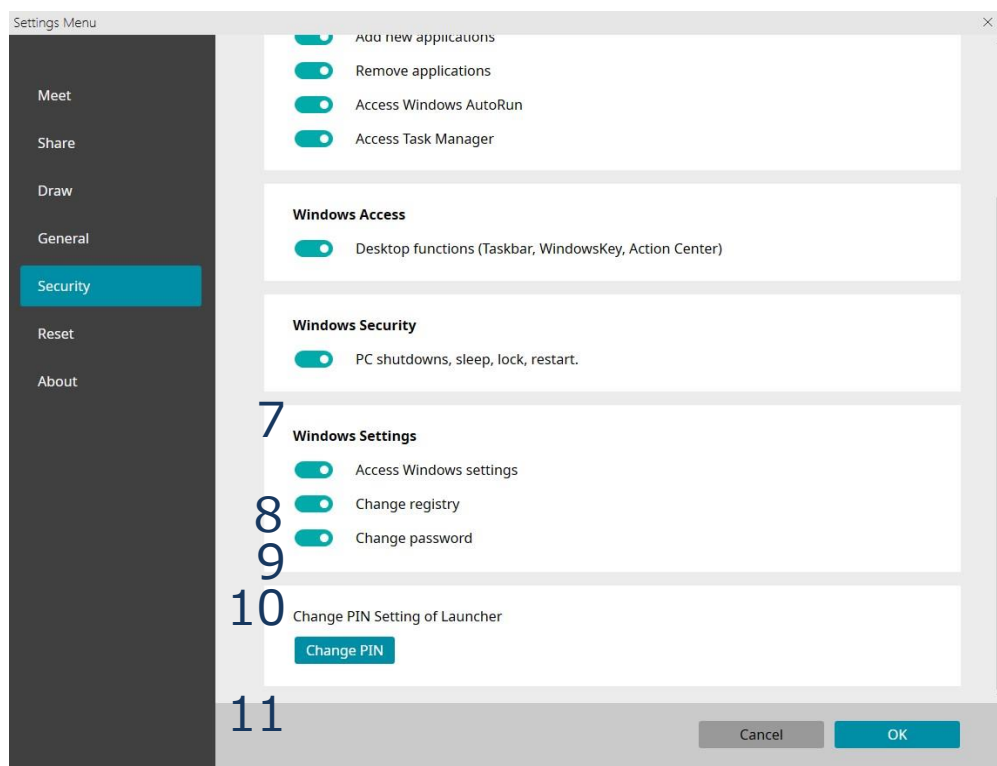
When you select “Security” in the settings menu, Sharp Meeting Launcher will restart as administrator for additional security. Press “OK” to access the launcher security settings.



1. All security settings: Change all security settings at once, “Disable all” or “Enable all”.
2. Add new applications: Permission of installing new apps to the Windows PC. Allow or prohibit users to install new apps.
3. Remove applications: Permission of removing apps from the Windows PC. Allow or prohibit users to deinstall apps.
4. Access Windows AutoRun: Permission of access to Windows Autorun. Allow or prohibit users to access Windows Autorun.
5. Access Task Manager: Permission to access Windows task manager. Allow or prohibit users to access the task manager.
6. Desktop function: Permission to access Windows desktop functions (desktop, task bar, WindowsKey, Action enter). Allow or prohibit users to access desktop functions.

2. SHARP Meeting Launcher

2.6.1 Explanation of settings menu “Security” (2/2)



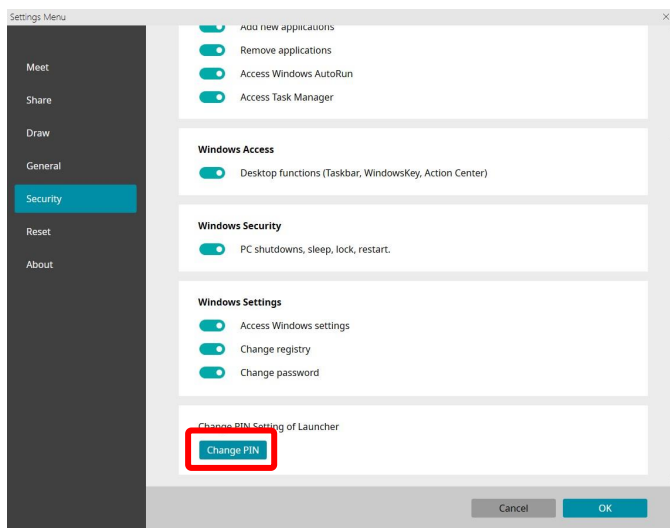
7. PC shutdowns, sleep, lock, restart: Permission of PC shutdown, sleep, lock and restart the Windows PC. Allow or prohibit users to shut down, sleep, lock and restart the Windows PC.
8. Access Windows settings: Permission of changing Windows settings. Allow or prohibit users to access Windows settings.
9. Change registry: Permission of changing Windows registry. Allow or prohibit users to change registry.
10. Change password: Permission of changing Windows password. Allow or prohibit users to change the Windows password on the PC.
11. Change PIN Setting of Launcher: Permission of changing PIN code to enter launcher settings. Allow or prohibit users to change the PIN code of launcher settings. Please refer to page 12 for more details.

Note: Windows Update may fail if security settings are disabled. If the update fails, please enable all security settings.

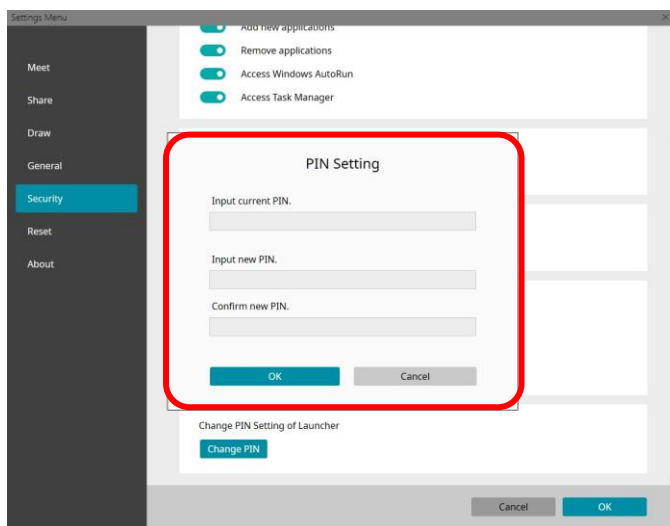
2. SHARP Meeting Launcher

2.6.2 How to change PIN code of Sharp Meeting Launcher

1. Click on "Change PIN" button.

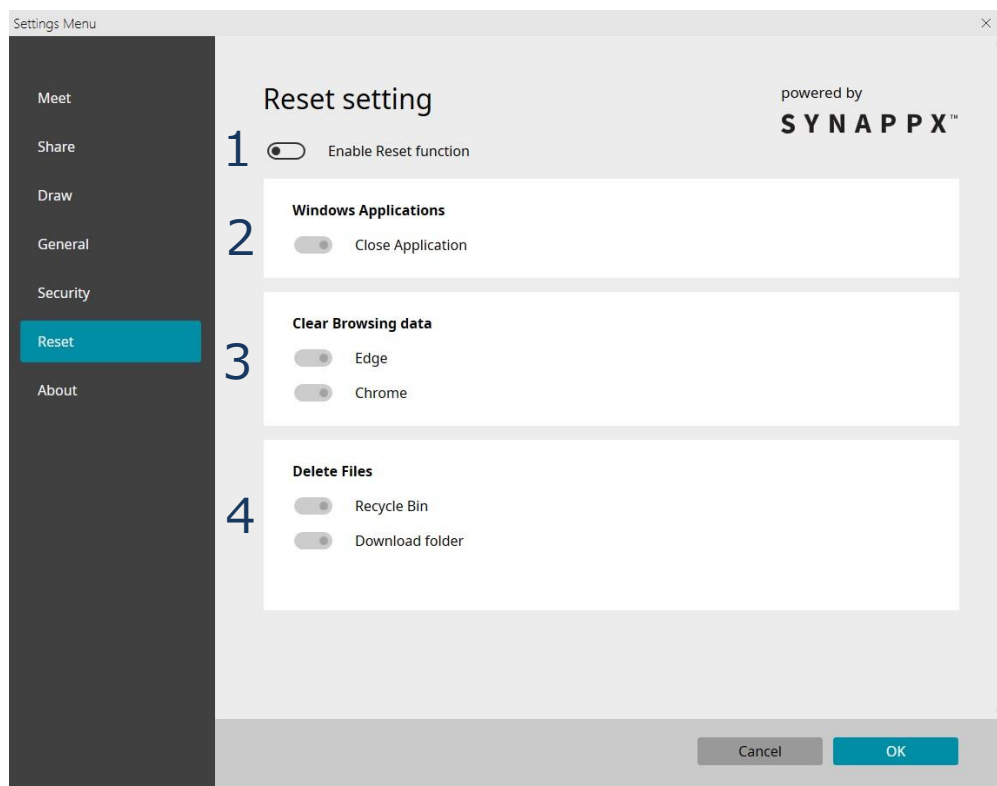


2. Input current and new PIN code.



3. Click on "OK" to enable the new PIN code for your SHARP Meeting Launcher.

2.7 Settings menu “Reset”



1. All reset settings: Change all reset settings at once. Enable or disable all reset functions.
2. Close Applications: Reset permission of opened apps. Enable or disable whether all open apps will close once a user is performing a reset after a meeting.
3. Clear Browsing data: Reset permission of browsing data. Enable or disable whether users browsing history for Edge and/or Chrome will be cleared once a user is performing a reset after a meeting.
4. Delete Files: Reset permission of files in Recycle Bin or Download folder. Enable or disable whether files stored in recycle bin or download folder will be deleted once a user is performing a reset after a meeting.

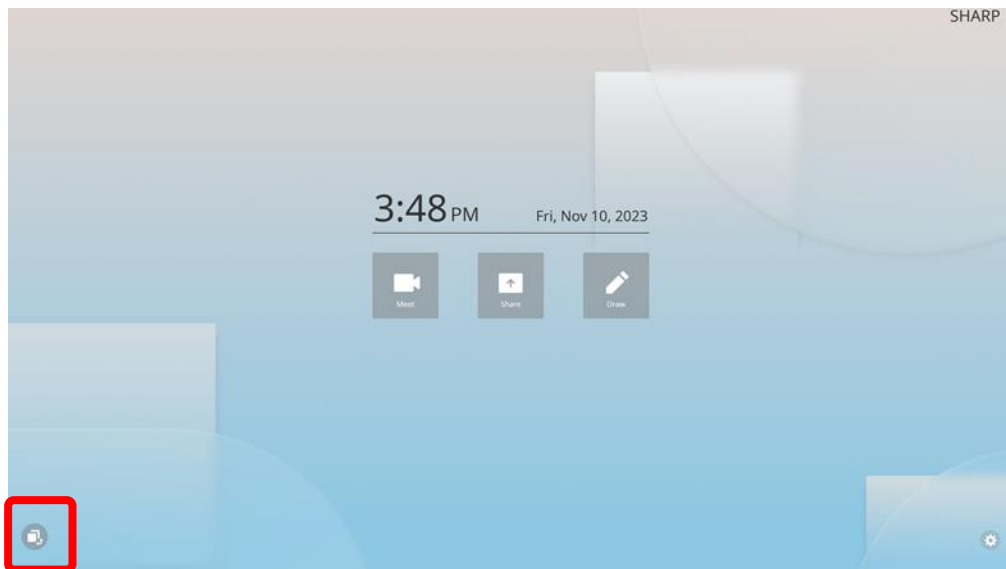
2. SHARP Meeting Launcher

2.8 Useful functions

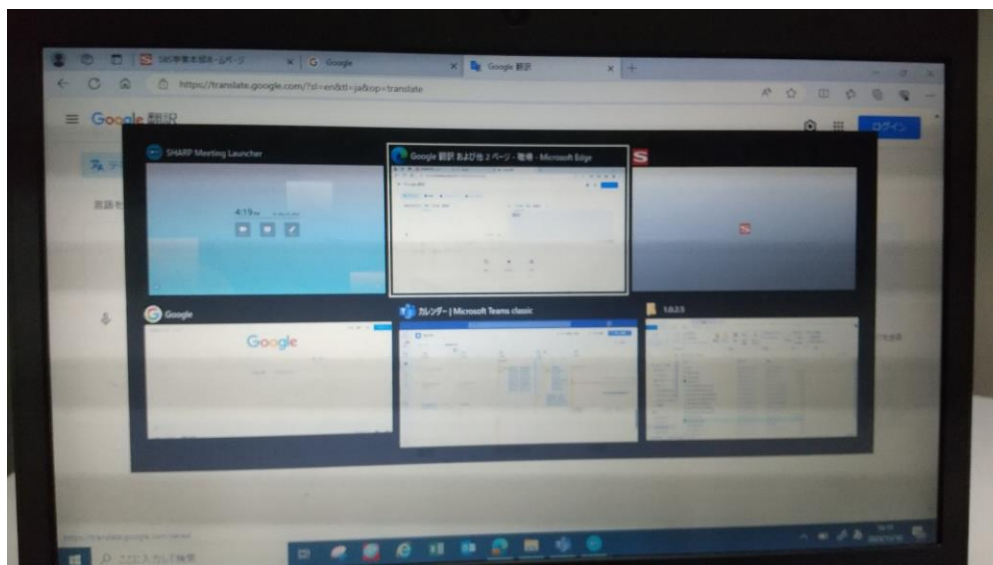
2.8.1 How to access opened apps and files

When the SHARP Meeting Launcher is launched, the app will always open in full screen mode which means users can't access opened apps or files from the Windows taskbar. The following steps explain you how to access opened apps or files.

1. Click on the Task view icon shown in the bottom left corner of the display..



2. All opened apps and files are shown on an overview screen. From here you can choose to open any app or file. Simply click on the app or file you want to open and the selected app or file will open.



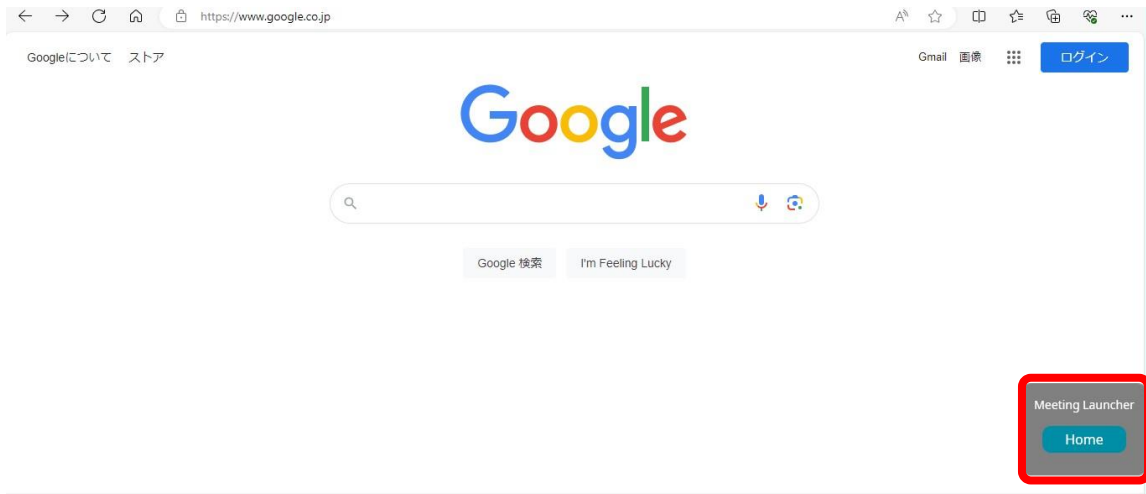
3. From the overview screen you can close apps or files by clicking on the small "X" in the top right corner of each app or file.

2. SHARP Meeting Launcher

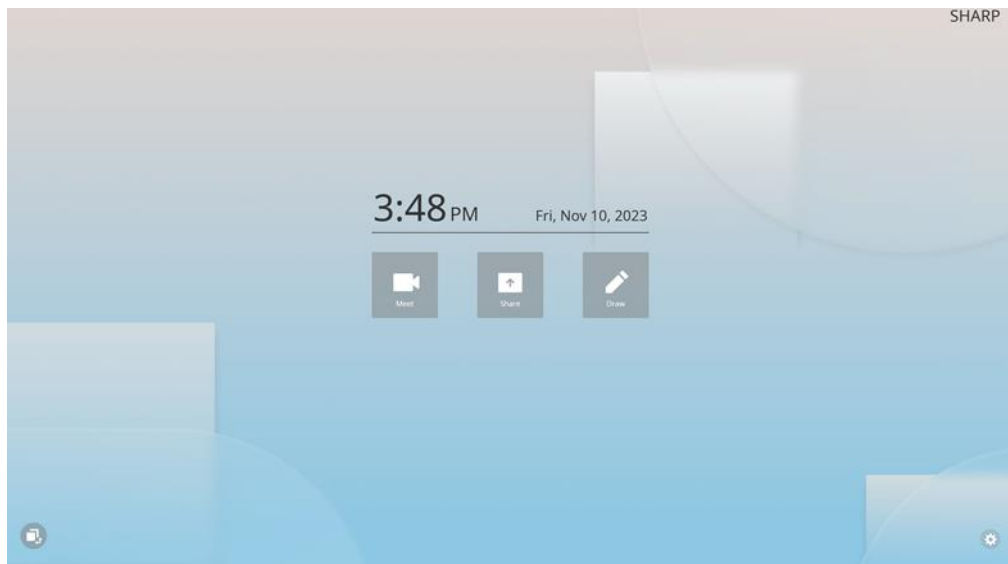
2.8.2 How to return to launcher home screen

When the access to the windows task board is blocked in the settings menu, users cannot easily go back to the launcher home screen when having another app or file opened. The following steps explain how to return to the home screen.

1. While working on an app or file, a “Home” button is shown in the bottom right corner of the screen. Click the “Home” button to return to the launcher home screen.



2. The application will return to SHARP Meeting Launcher home screen.

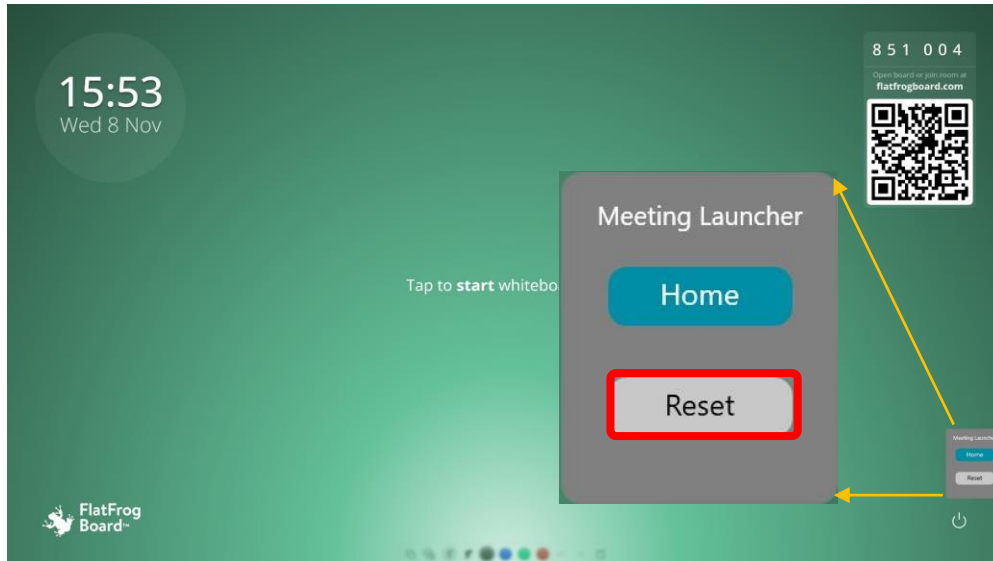


2. SHARP Meeting Launcher

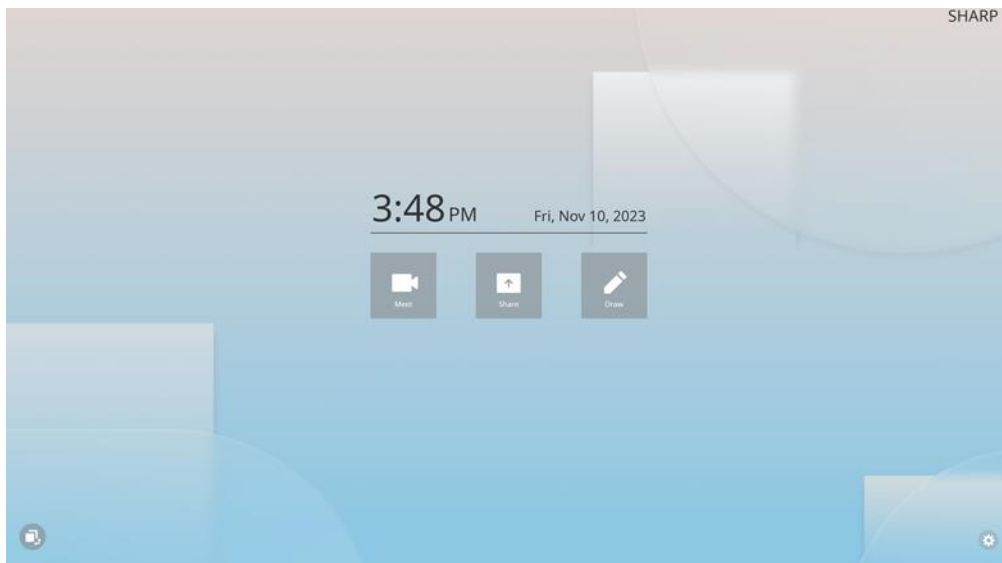
2.8.3 How to perform a reset after a meeting

If the reset function has been setup in the launcher settings menu (refer to page 17) a “Reset” button is shown on top of any open app or file in the bottom right corner of the display. The following steps explain how to perform a reset after a meeting.

1. Click on the “Reset” button after a meeting to ensure that no sensible data is left on the PC.



2. A message will pop-up to inform the user of the specific reset functions being executed. Click on “OK” to confirm the reset.
3. Depending on the reset functions being setup in the launcher settings menu, the Sharp Meeting Launcher will reset and return to SHARP Meeting Launcher home screen.



REVISION HISTORY

Date	Revision	Changes
2024-01-11	1.0	

SHARP

SHARP CORPORATION